

XLN SERIES STEEL LED EXIT By CHLORIDE SYSTEMS

EMERGENCY LED EXIT SIGN INSTALLATION AND OPERATING INSTRUCTIONS

IMPORTANT SAFEGUARDS

When using electrical equipment, basic safety precautions should always be followed, including the following:

READ AND FOLLOW ALL SAFETY INSTRUCTIONS

All servicing should be performed by qualified personnel only.

Do not use this equipment outdoors.

Do not mount near gas or electric heaters.

Equipment should be mounted in locations and at heights where it will not readily be subjected to tampering by unauthorized personnel.

The use of accessory equipment not recommended by the manufacturer may cause an unsafe condition.

Do not use this equipment for other than intended use.

Do not let power supply cords touch hot surfaces.

Do not mount near open flames or sparks.

Do not install equipment in areas of excessive moisture.

WARNING - Shut off AC power to branch circuits to which units will be connected. All wiring should be per National Electrical Code and local regulations.

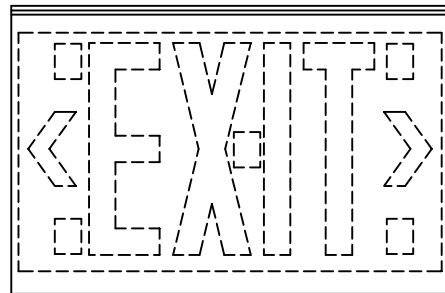
To maintain warranty, equipment with batteries must be installed or placed on charge within prescribed period after shipment.

SAVE THESE INSTRUCTIONS

INSTRUCTIONS - GENERAL

Stencil Face – Chevron Removal (See Figure 1)

1. Remove stencil face door(s) from exit frame.
2. Remove lens.
3. Remove desired chevron knockout in stencil door(s).
4. Remove backing from double sided tape on stencil door, center lens over stencil face and press down firmly against double sided tape.



#6 SCREW (2)

FIGURE 1

INSTRUCTIONS - INSTALLATION

Determine mounting method required and select appropriate instruction from following list. Electrical hookups may be made inside power pack after mechanical assembly is completed. All parts needed to mount the exit are supplied with the exception of wire nuts for AC supply connections and wire ties for end mounting.

A. Top or End Mount With Canopy

(See Figures 4 or 5 on page 2)

1. Assemble canopy mounting plate to outlet box.
2. Route AC service (line, common and ground) through hole in center of mounting plate.
3. Remove reflector, if applicable. (See Figure 2)
4. Remove appropriate knockouts for top or end mounting. (See Figure 3)
5. Mount canopy to exit frame using #6 alignment screws (2) provided.
6. Insert nipple into hole in canopy and exit frame and secure using (2) locknuts provided.
7. Route AC service wires (blue, black, white and green) from exit through nipple into canopy.
8. Make electrical hookups inside power pack as described on page 2.
9. Mount exit assembly to mounting plate using #8 screws (2) provided.

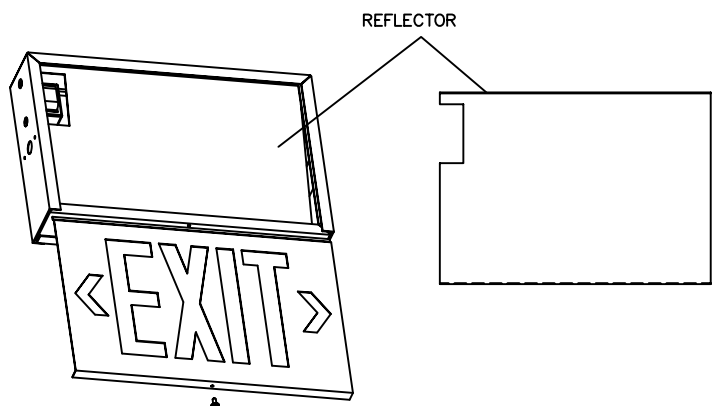


FIGURE 2. (Single Face Red LED Exit Only)

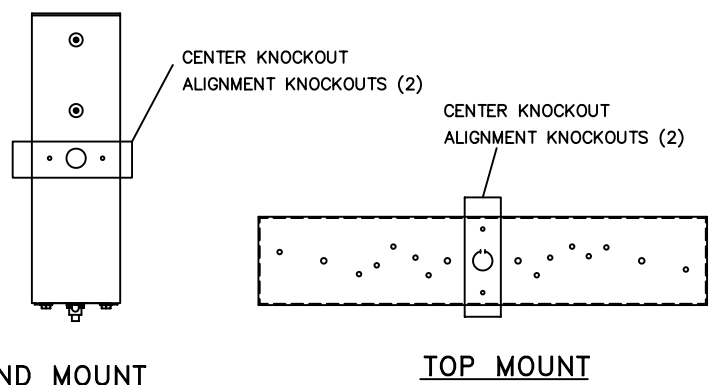


FIGURE 3

XLN SERIES EMERGENCY STEEL LED EXIT

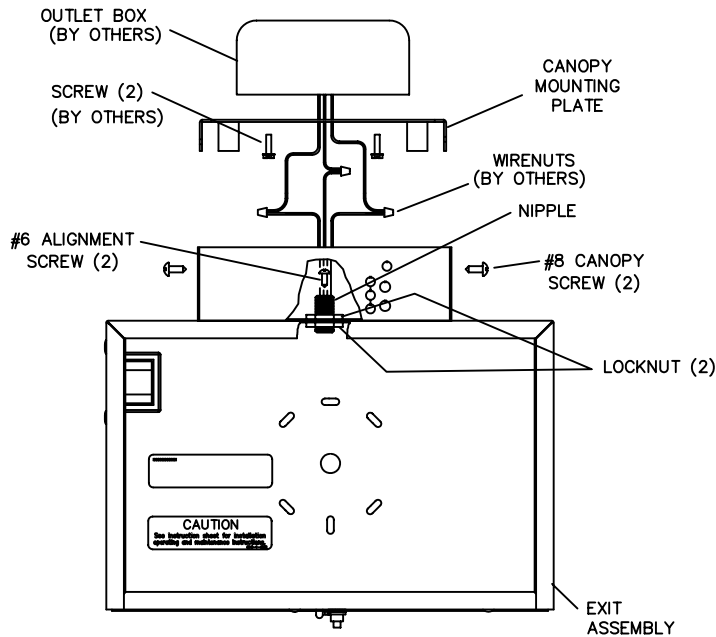


FIGURE 4

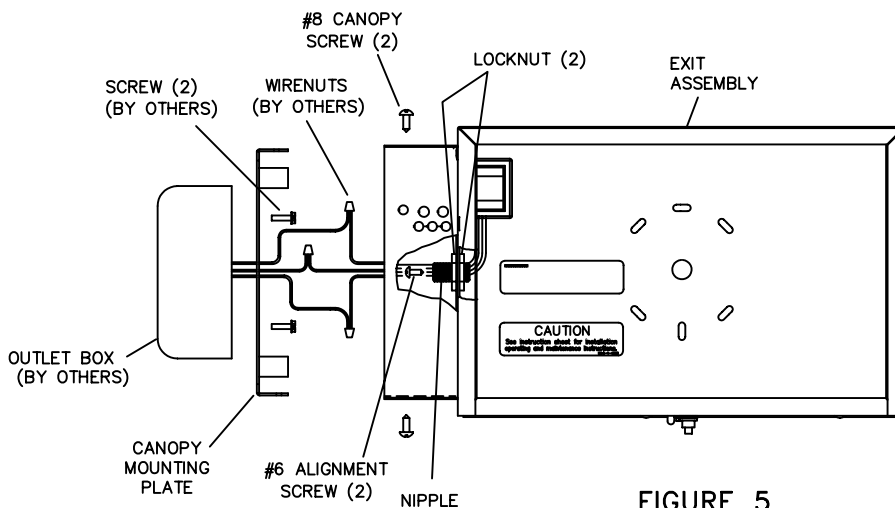


FIGURE 5

B. Surface Mount Without Canopy

1. Remove reflector panel from inside of exit.
(See Figure 2)
2. Remove exit backplate.
3. Remove appropriate mounting knockouts from exit backplate.
4. Reassemble backplate to exit.
5. Route the AC service (line, common and ground) through the center hole in the backplate and mount to the outlet box.
6. Make electrical hookups as shown below.

C. INSTRUCTION - INTERNAL WIRING HOOKUP

1. Locate and assemble battery connector to mating connector.

WARNING: Battery must be connected as described to prevent possible damage or failure.

2. Make electrical hookups at this time as follows:

120V Unit

Black wire to 120V
White wire to common
Green wire to ground

277V Unit

Blue wire to 277V
White wire to common
Green wire to ground

Unused primary wire must be insulated to prevent shorting.

3. If Fire Alarm Flasher option is used:
 - Connect RED wire to 24VDC POSITIVE
 - Connect YELLOW wire to 24VDC NEGATIVE
 Use wire nuts for connection, (not supplied).
4. Replace reflector, if applicable.
5. Replace exit door(s) and secure with #6 screw(s).

D. INSTRUCTIONS - OPERATING

1. Energize AC to exit and check that pilot lamp is glowing and AC lamps are illuminated.
2. Press test switch and verify that pilot lamp shuts off and LEDs stay illuminated.
3. Leave AC connected for a minimum of 24 hours before performing any abbreviated testing. Full recharge of batteries may take up to one (1) week.