

Synthesis Zone Inverter



100 to 250-Watts Interruptible Power

Applications

Aesthetically sensitive areas where powering existing incandescent or fluorescent lighting fixtures is desired.*



*Compatibility testing has been performed on certain LED luminaires, contact factory for specifics.

Construction Overview

- Temperature compensated, variable rate, float charging system
- Universal 120/277VAC, 60 Hz selectable input and output
- Load transfer relays and fused AC output power standard
- AC status indicator and local push to test switch standard



Product Options

- Time Delay, 15-minutes
 - Specify 120 or 277VAC
 - Satisfies article 700.16 of the NEC
- Self-testing Diagnostics
 - Satisfies the periodic testing requirements in the IFC and NFPA 101*



*UL approved, self-testing diagnostics allow compliance for the monthly (30-day) test requirements. Manual annual testing is always required

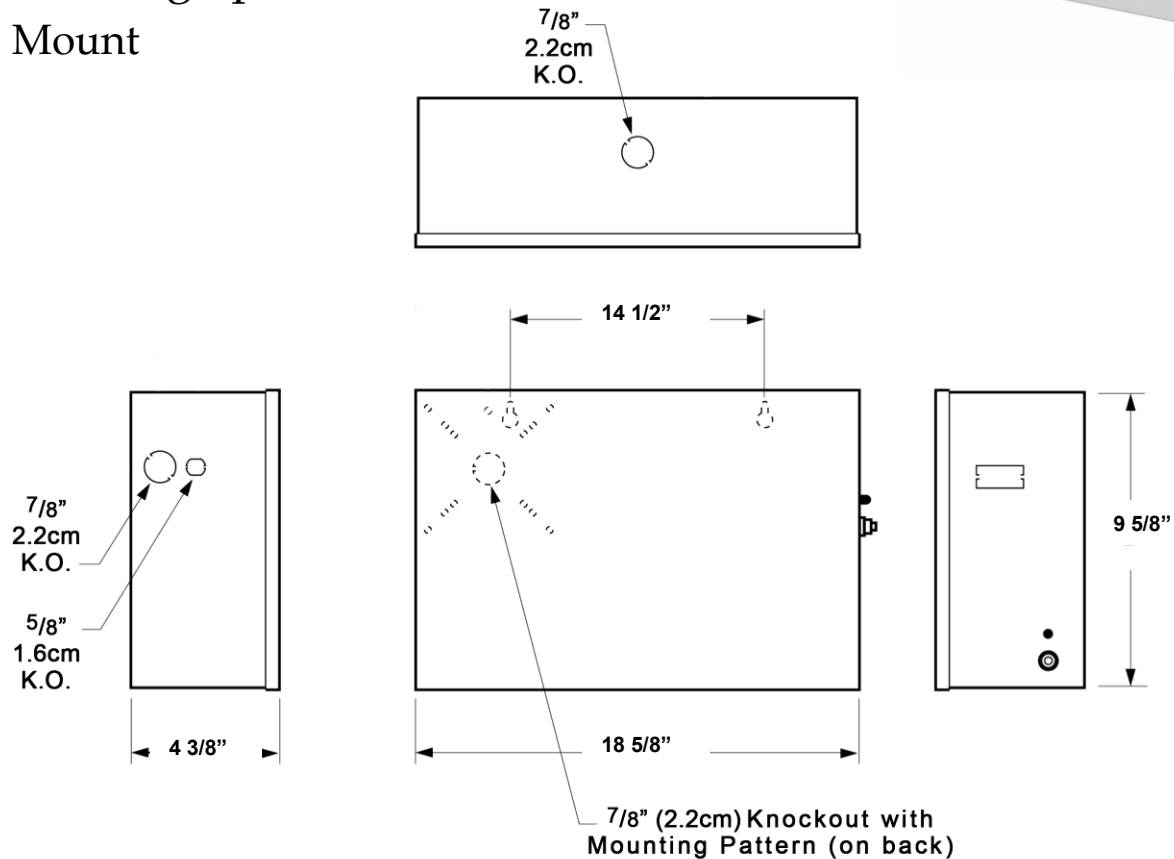
Installation

- 100-Watt Mounting options
 - Surface Mount
 - Recessed Mount
 - T-Grid Mount



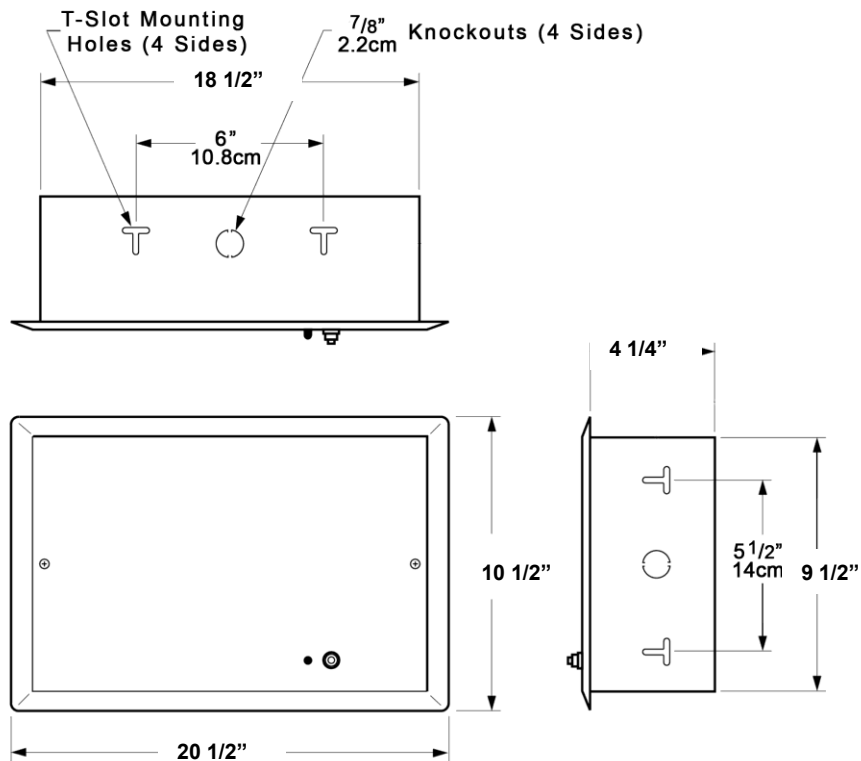
Installation

- 100-Watt Mounting options
 - Surface Mount



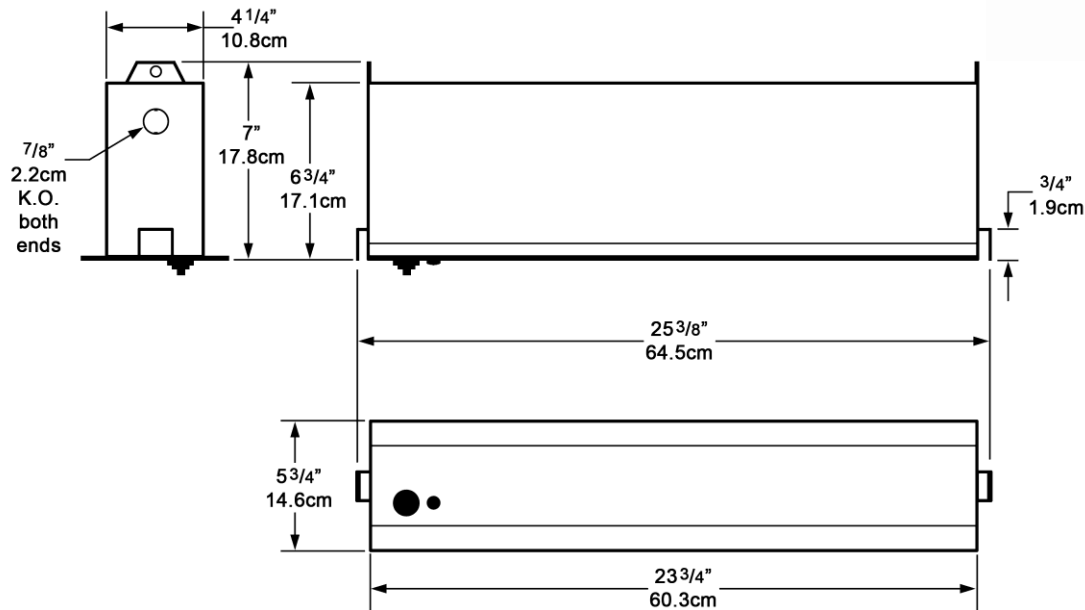
Installation

- 100-Watt Mounting options
 - Recessed Mount



Installation

- 100-Watt Mounting options
 - T-Grid Mount



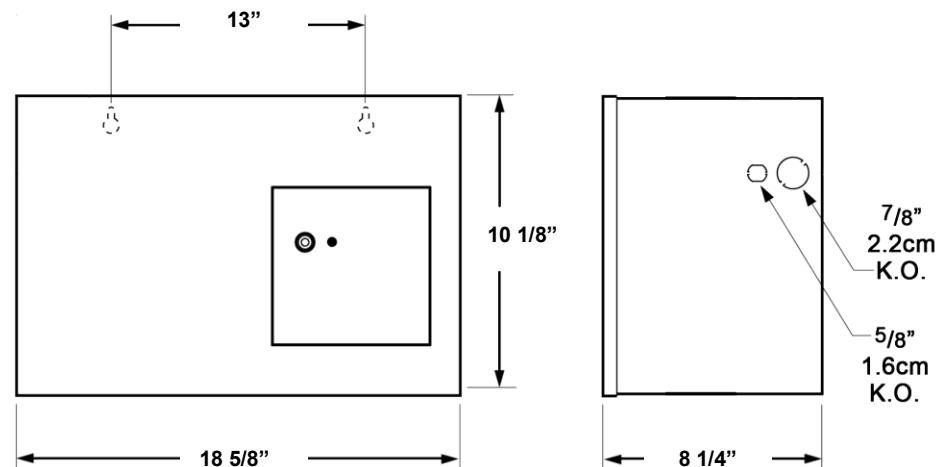
Installation

- 250-Watt Mounting options
 - Surface Mount



Installation

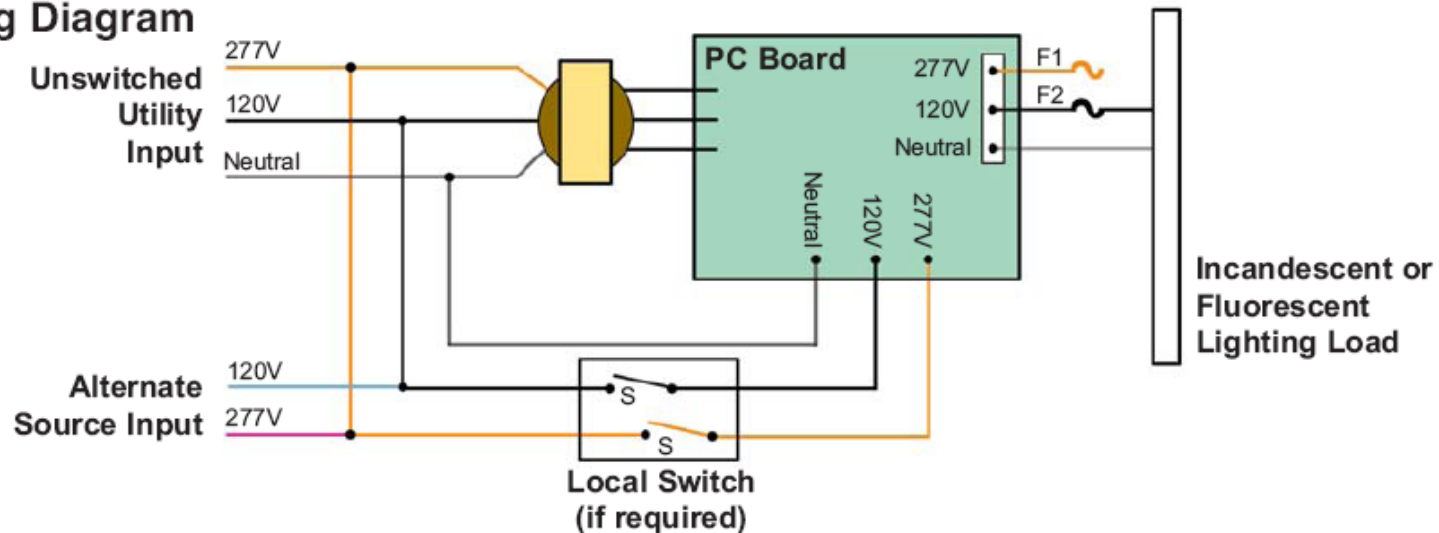
- 250-Watt Mounting options
 - Surface Mount



Installation

- Un-switched utility power is required directly into the Zone Inverter while switched or un-switched utility power controls the normally on function of the luminaire

Wiring Diagram



Installation

- Designated emergency fixtures may be switched or dimmed while serving as egress units at 91% nominal fixture output

